

ACME-SHOREY

PRECAST CONCRETE PRODUCTS

WWW.ACMESHOREY.COM

PHONE (508) 548-9607

FAX (508) 548-1664

CARVER, MA

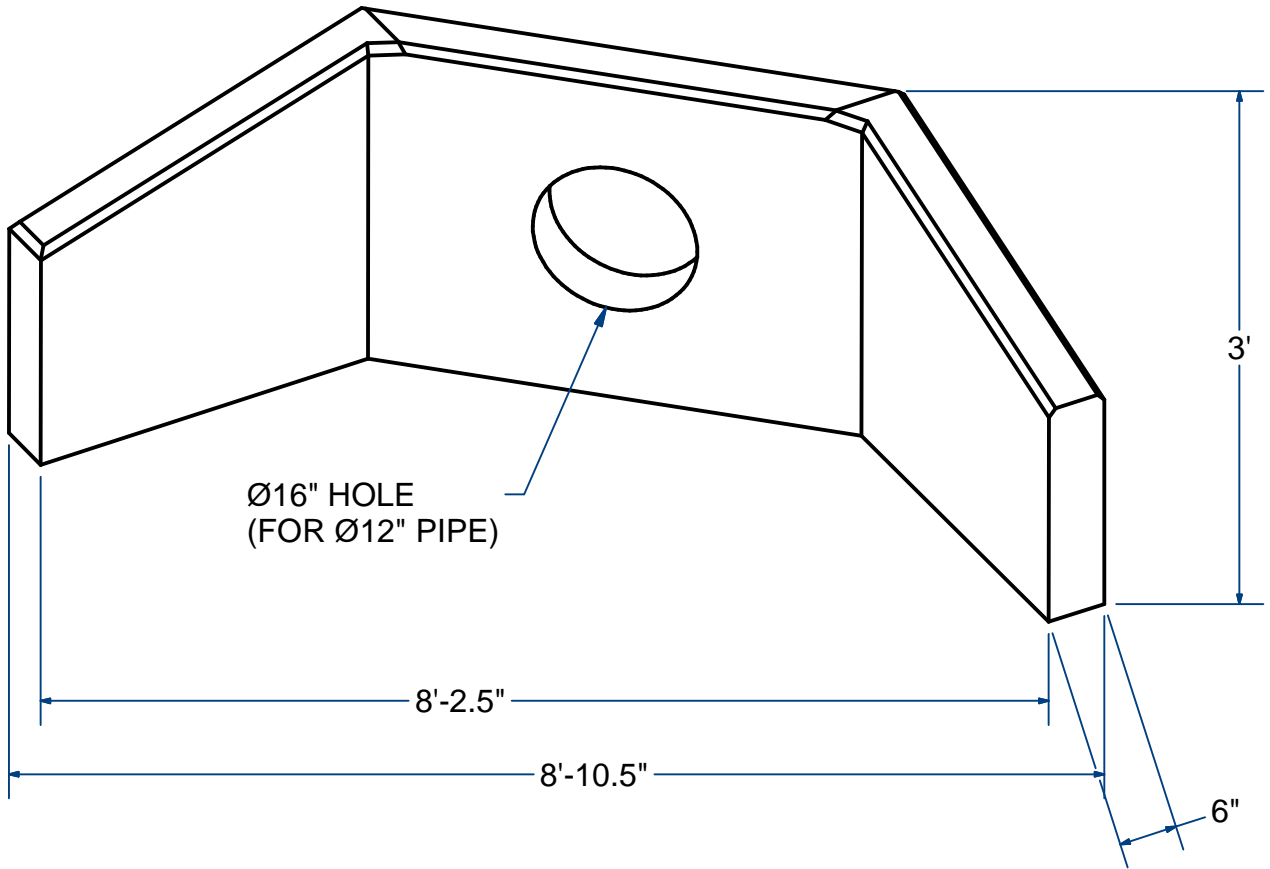
334 TREMONT STREET

HARWICH, MA

36 GREAT WESTERN ROAD

NOTES:

1.) OPTIONAL HOLE SIZES AVAILABLE.



WING WALL

6" Thick

3' Ht

ITEM# WW12-6W

Wt. 2,000 Lbs

16-2.1

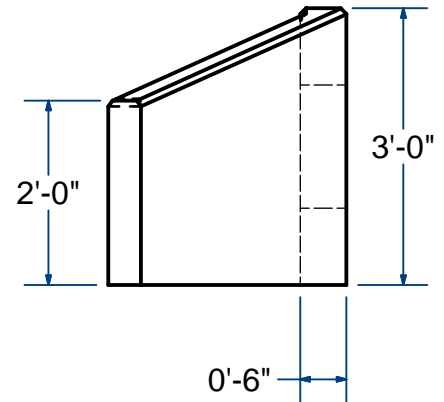
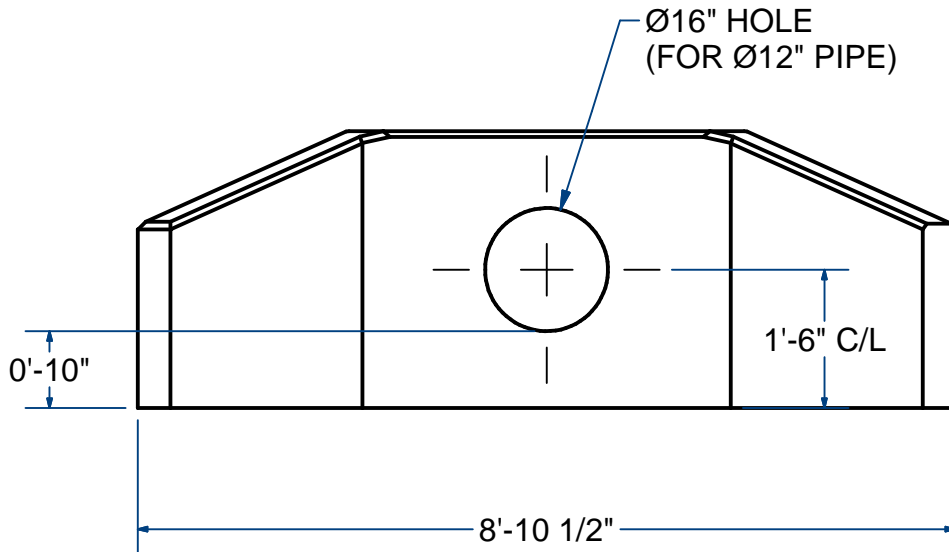
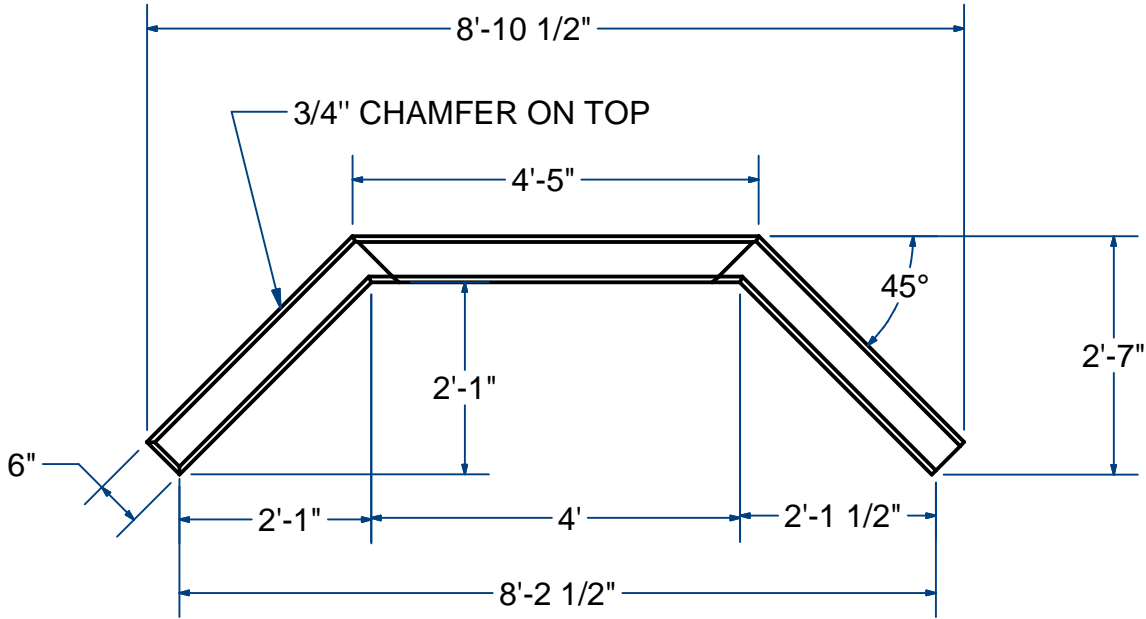
Sht 1 of 2

ACME-SHOREY

PRECAST CONCRETE PRODUCTS

NOTES:

1.) OPTIONAL HOLE SIZES AVAILABLE.



NAME: WING WALL, 6" Thick X 3' Ht.

H-20

ITEM# WW12-6W

Concrete Minimum Strength: 5,000 p.s.i. at 28 days
Steel Reinforcement: ASTM A615, Grade 60
Design Loading: standard units - AASHTO - H20

WEIGHT 2,000

Lbs

C

DATE: 6-8-21

Ch 16

Pg 2.1

Sht 2 of 2