

ACME-SHOREY

PRECAST CONCRETE PRODUCTS

WWW.ACME-SHOREY.COM

PHONE (508) 548-9607

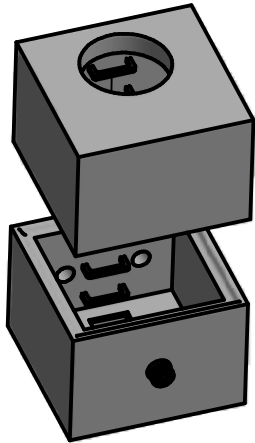
FAX (508) 548-1664

CARVER, MA

334 TREMONT STREET

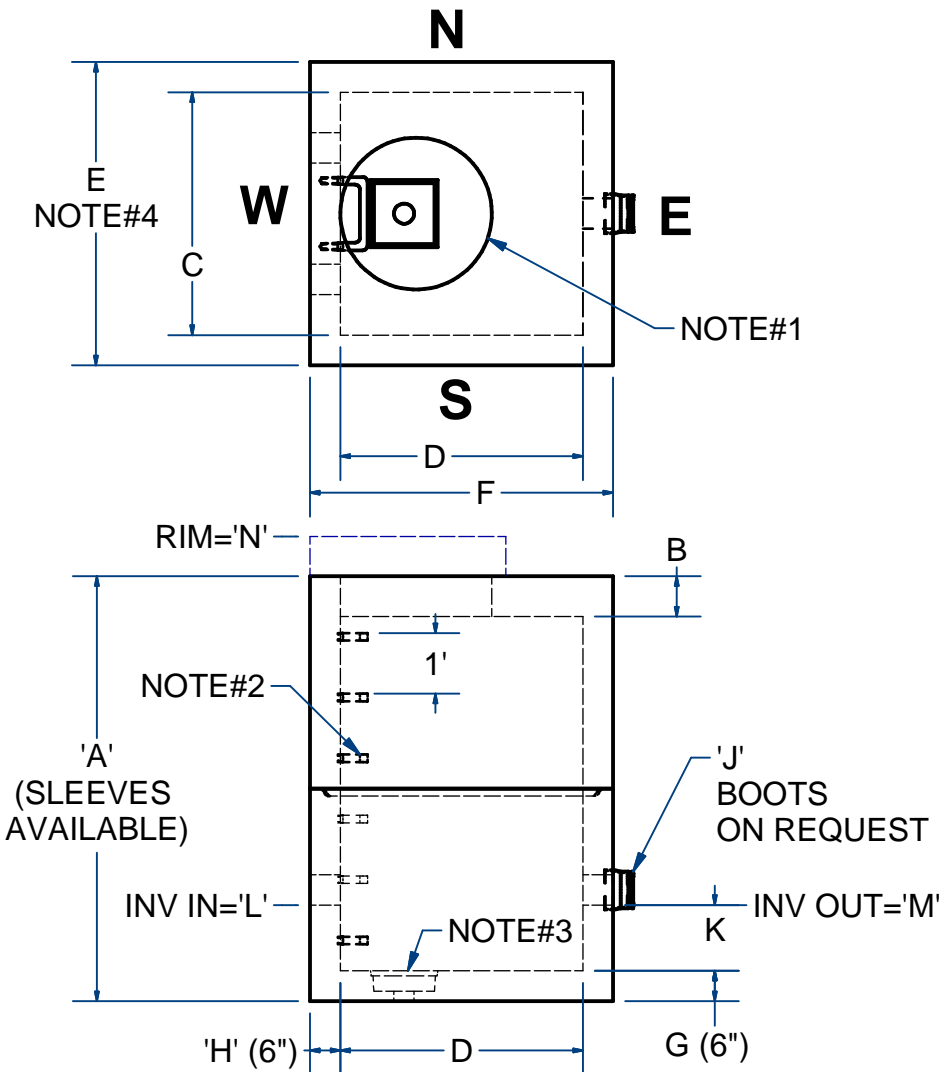
HARWICH

36 GREAT WESTERN ROAD



NOTES:

- 1.) OPTIONAL- ACCESS PER PLAN
A.) CAST IN ALUM HATCH
B.) CAST IN RING & COVER.
- 2.) OPTIONAL- POLY STEPS OR ALUM LADDER.
- 3.) OPTIONAL- CAST IN 12" X 12" SUMP W/POLYGRATE.
(SOLID BOTTOM OR PENETRATION FOR DRAINBACK)
- 4.) TYPICAL SIZES 4X4,5X5,6X6, 6X8 X VARIOUS HEIGHTS
BUILT TO ORDER.
- 5.) SEAM SEALED WITH FLEXIBLE BUTYL RUBBER SEALANT.



Dim	Desc.	Required
A	Height	
B	Top Thick	
C	I.D.	
D	I.D.	
E	O.D.	
F	O.D.	
G	Floor Thick	6"
H	Wall Thick	6"
Options		
Steps	Yes	No
Holes	Yes	No
C.I.P. (Hatch)	Yes	No
Coated	Yes	No
Drain In		
Drain Out		
Sump w/Grate	12"X12"	
J	Boot Dia.	
K (ht)	Sump	
Access Location	N	E
	S	W
Hatch Offset	N	E
	S	W
Hinge Location	N	E
	S	W
Ext Damproof	Yes	No
Ext Wrap	Yes	No
Extended Base	Yes	No
INV IN 'L'		
INV OUT 'M'		
RIM 'N'		

NAME: VAULT CHAMBER

ITEM# VC

Concrete Minimum Strength: 5,000 p.s.i. at 28 days
Steel Reinforcement: ASTM A615-68 GRADE 60
Design Loading: standard units - AASHTO -H-20

SUBMITTAL:

APPR. _____

Date

Sales X

TOP TBD Lbs
BOTTOM TBD Lbs

Contractor X

CH DATE: 5-3-18 R 0

Job Ch15 Pg1.1-1.6 Sht1

Job Name X