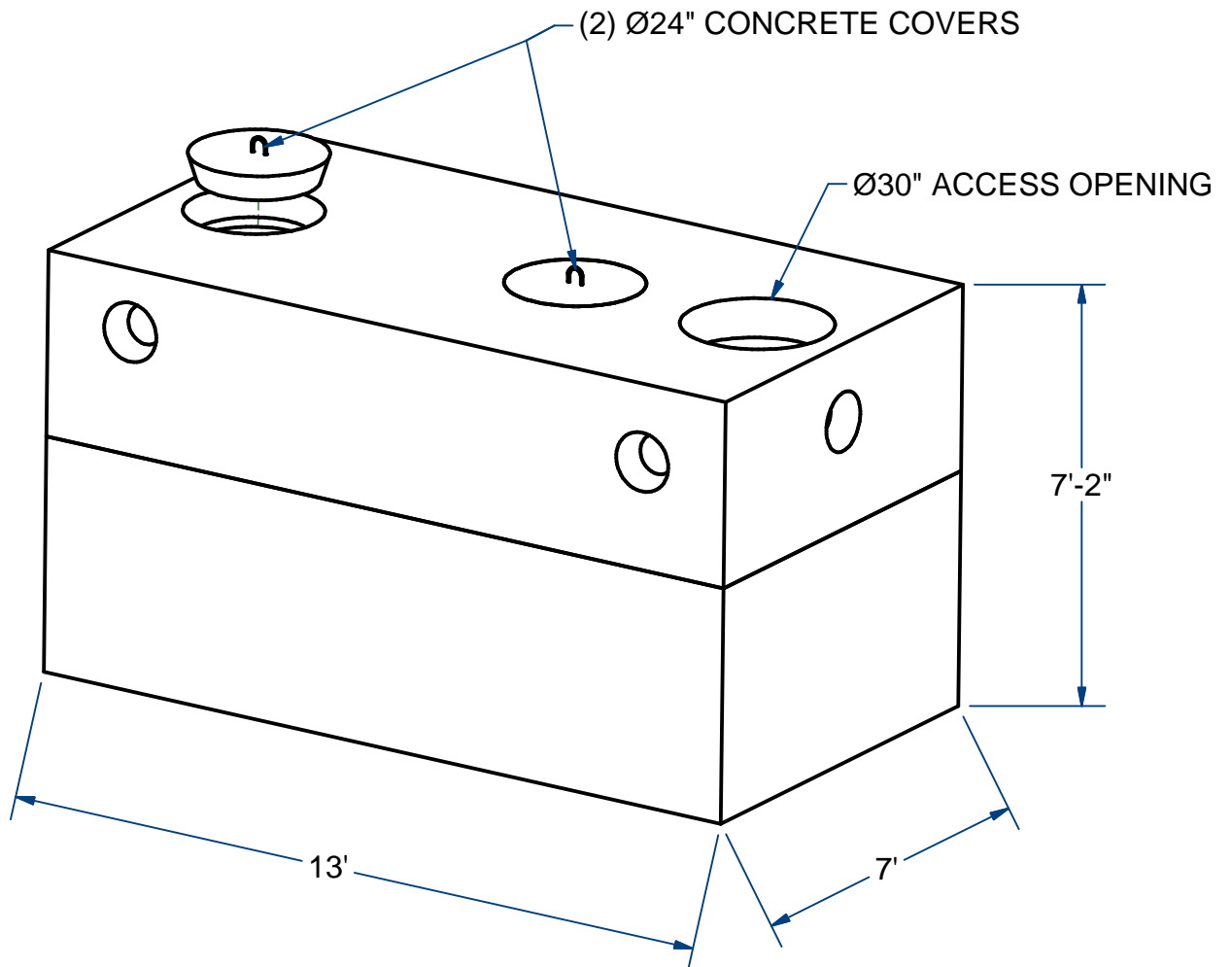


NOTES:  
1.) SEAM SEALED WITH FLEXIBLE BUTYL RUBBER SEALANT.



## PUMP CHAMBER

H20

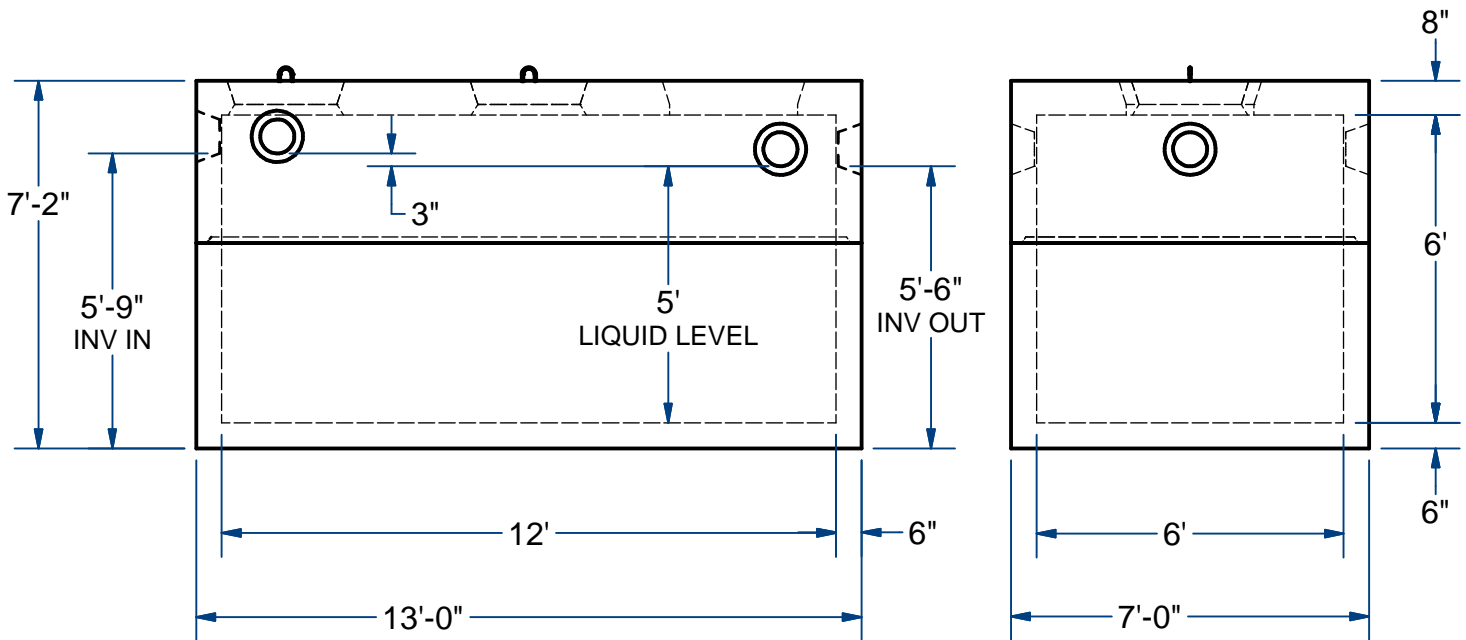
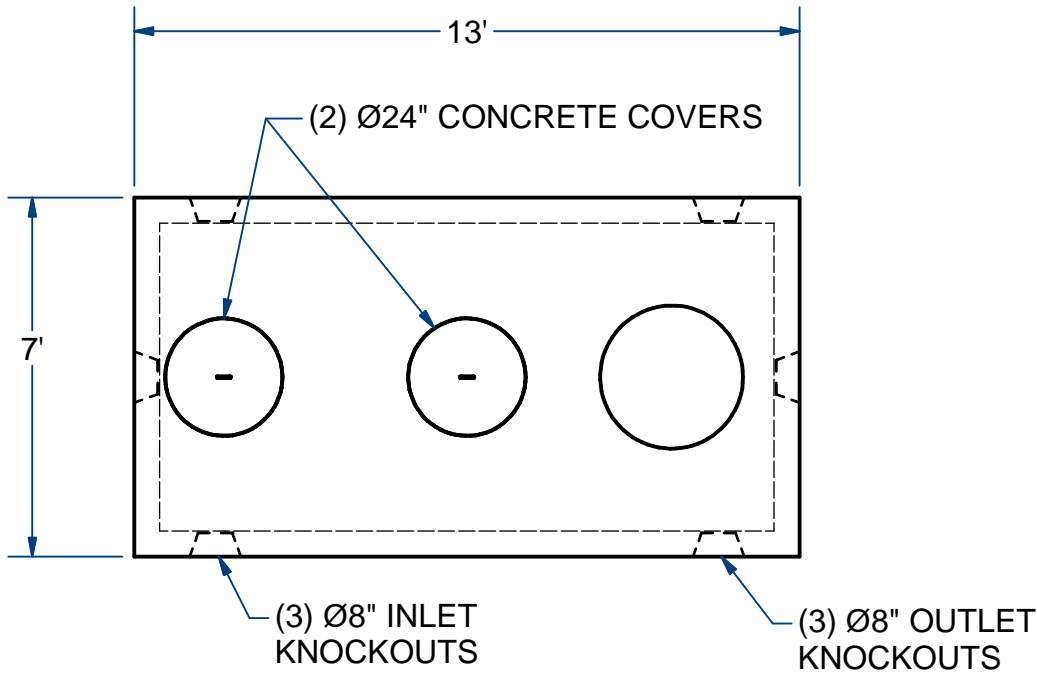
2,500 Gallon

# ACME-SHOREY

PRECAST CONCRETE PRODUCTS

**NOTES:**

- 1.) SEAM SEALED WITH FLEXIBLE BUTYL RUBBER SEALANT.



**NAME: PUMP CHAMBER, LowPro, 2500 Gallon H-20 ITEM# PC252LP30**

Concrete Minimum Strength: 5,000 p.s.i. at 28 days  
 Steel Reinforcement: ASTM A615, Grade 60  
 Design Loading: standard units - AASHTO - H20

TOP 15,800 Lbs  
 BOTTOM 18,250 Lbs

C DATE: 5-22-2019  
 Ch 9 Pg 10.2 Sht 2 of 2