

TRANSFORMER PAD FOUNDATION (NE-12)

SINGLE PHASE (25-167 KVA)

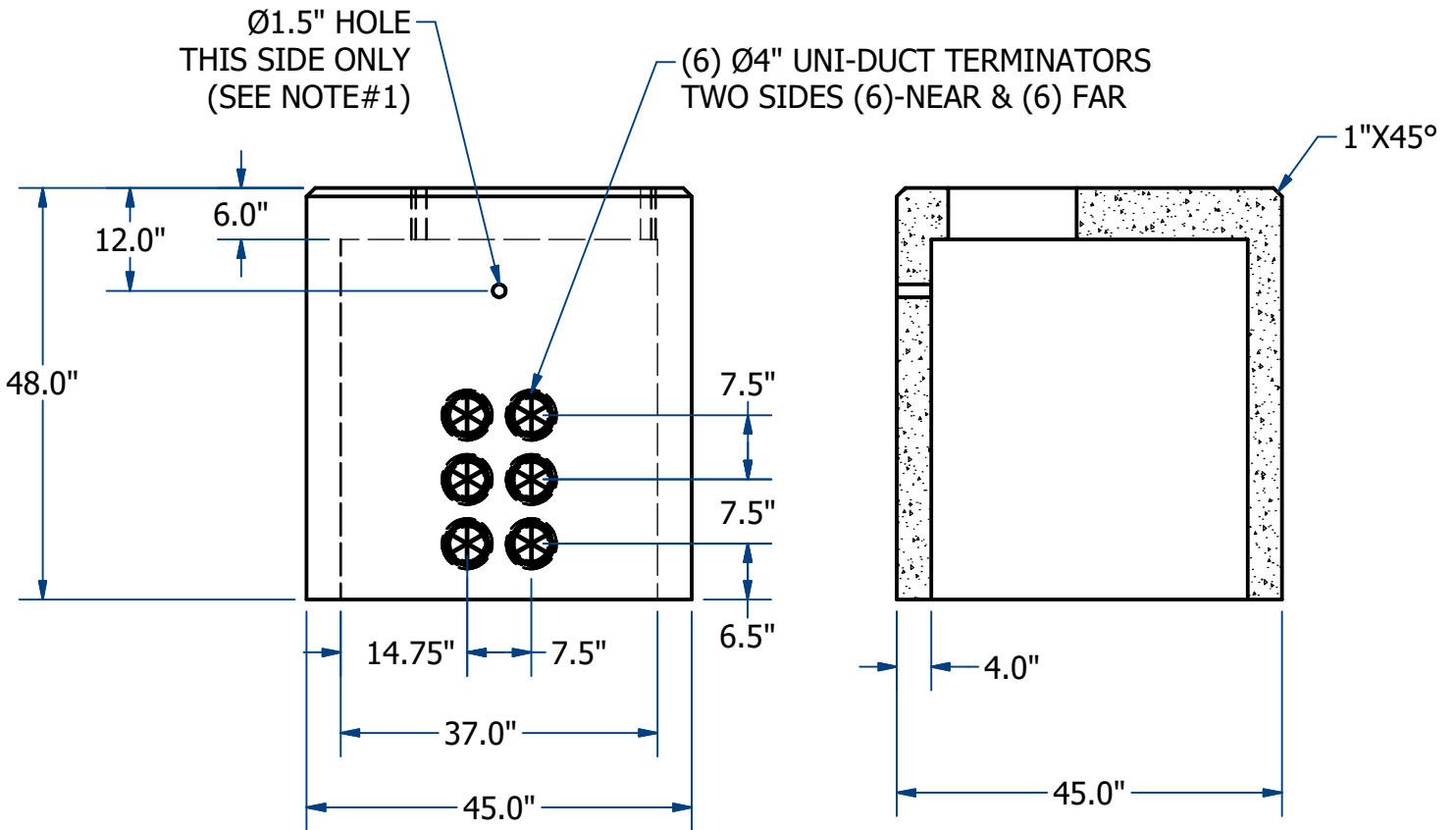
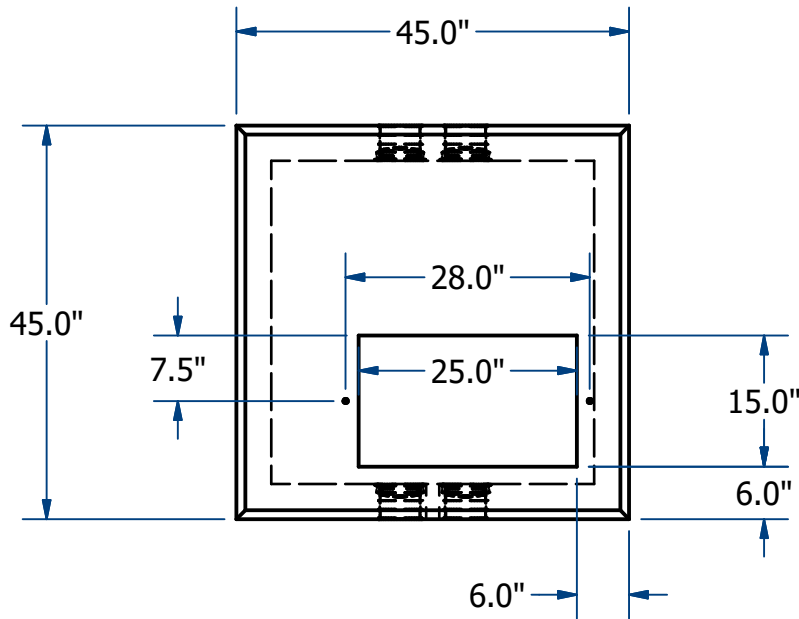
H10

ACME-SHOREY

PRECAST CONCRETE PRODUCTS

NOTES:

1.) GALVANIZED PULLING EYES AVAILABLE.



NAME: TRANSFORMER PAD FOUNDATION, (NE-12)
(SINGLE PHASE 25-167 KVA)

H10

ITEM# ENE12

Concrete Minimum Strength: 4,000 p.s.i. at 28 days
Steel Reinforcement: ASTM A615, Grade 60
Design Loading: standard units - AASHTO - H10

WEIGHT 3,250

Lbs

C

DATE: 10-5-21

Ch 23 Pg 4.1 Sht 2 of 2