

# ACME-SHOREY

PRECAST CONCRETE PRODUCTS

WWW.ACMESHOREY.COM

PHONE (508) 548-9607

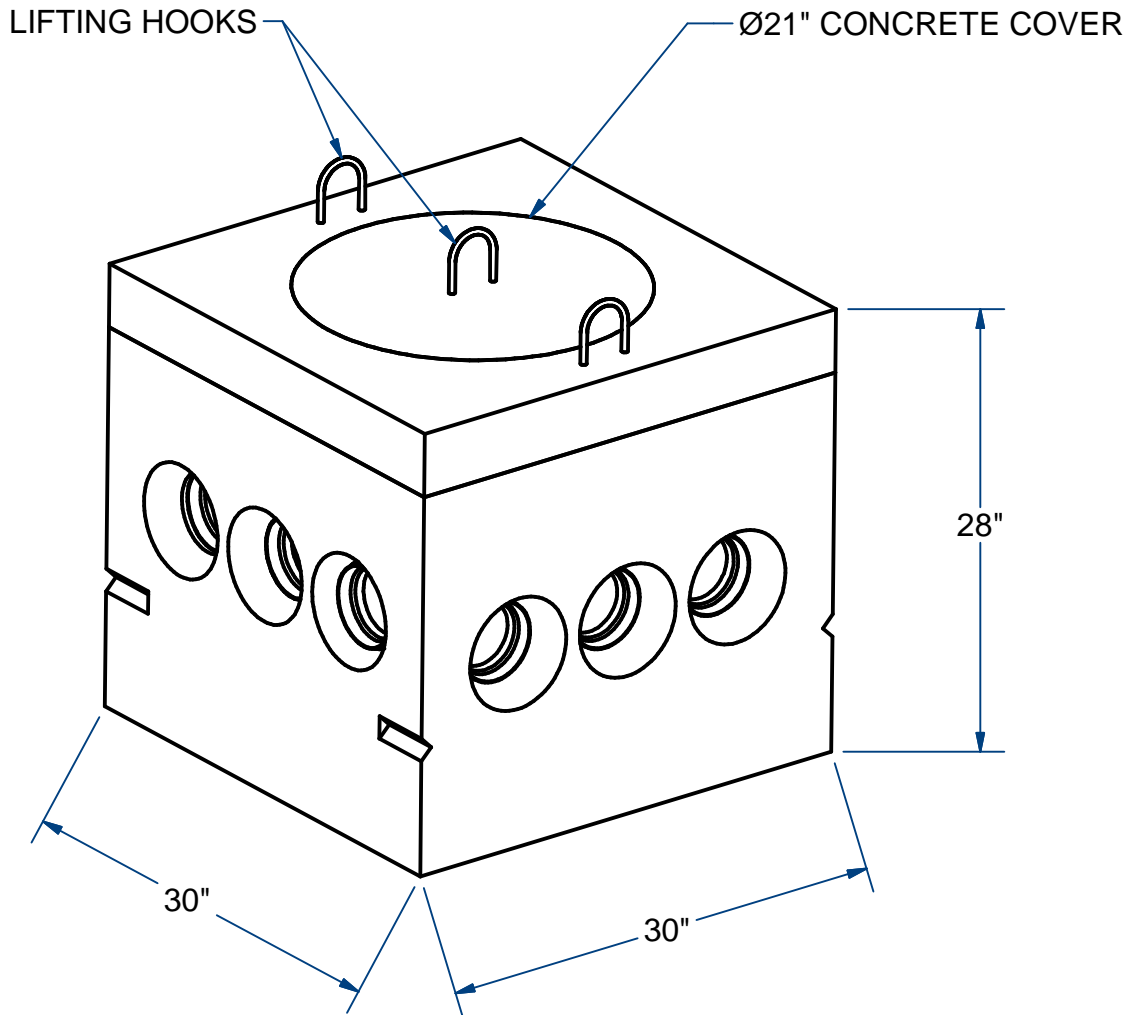
FAX (508) 548-1664

CARVER, MA  
334 TREMONT STREET

HARWICH, MA  
36 GREAT WESTERN ROAD

## NOTES;

- 1.) INLET AND OUTLETS PROVIDED WITH 4" POLY KNOCKOUTS.
- 2.) AVAILABLE RISER x 20" Ht. (#DBR9202)



## DISTRIBUTION BOX (30" X 30")

H20

9 Outlets

ITEM# DB92

Wt. 1340 Lbs

11-3.2

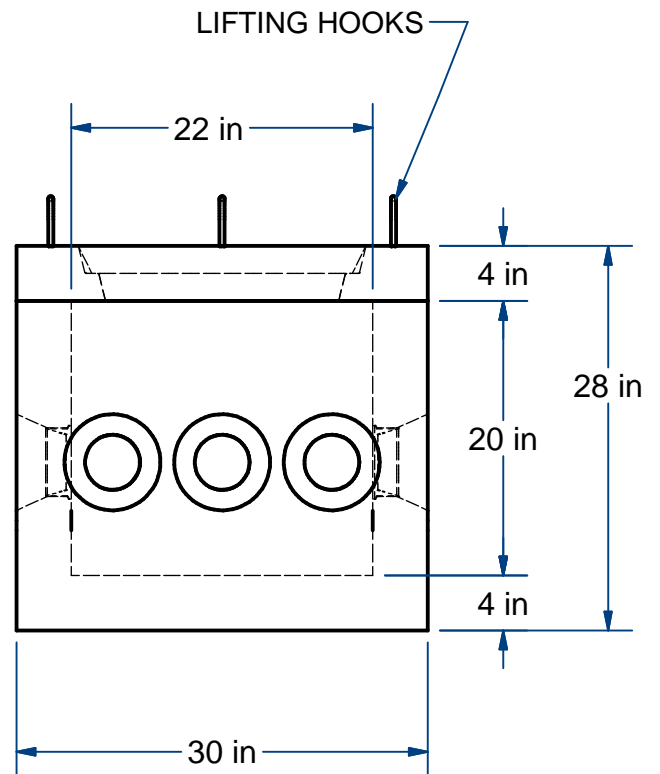
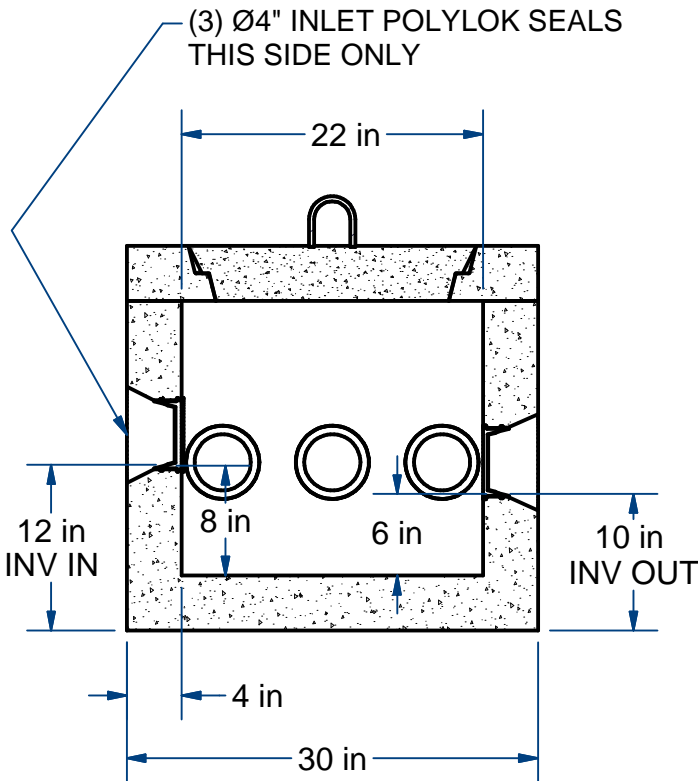
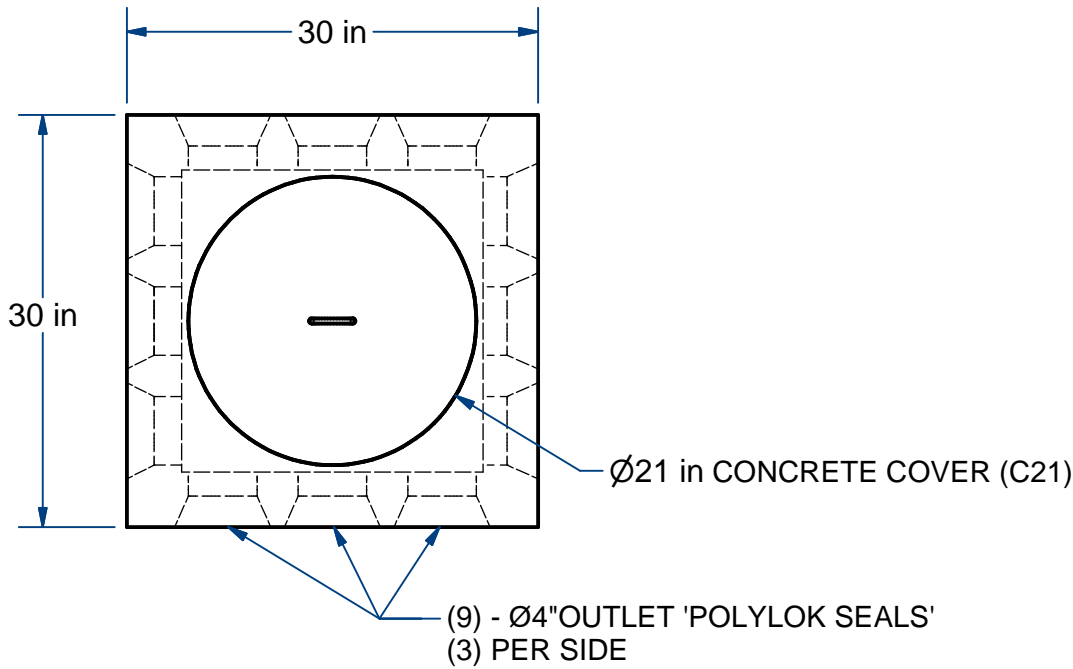
Sht 1 of 2

# ACME-SHOREY

PRECAST CONCRETE PRODUCTS

NOTES;

- 1.) INLET AND OUTLETS PROVIDED WITH 4" POLY KNOCKOUTS.
- 2.) AVAILABLE RISER X 20" Ht. (#DBR9202)



**NAME: DISTRIBUTION BOX, 9 OUTLETS**

**H-20**

**ITEM# DB92**

Concrete Minimum Strength: 5,000 p.s.i. at 28 days  
 Steel Reinforcement: ASTM A615, Grade 60  
 Design Loading: standard units - AASHTO - H20

TOP 340  
 BOTTOM 1000

Lbs  
 Lbs

CH

DATE: 11-9-2019

Ch 11 Pg 3.2 Sht 2 of 2