

# ACME-SHOREY

PRECAST CONCRETE PRODUCTS

WWW.ACME-SHOREY.COM

PHONE (508) 548-9607

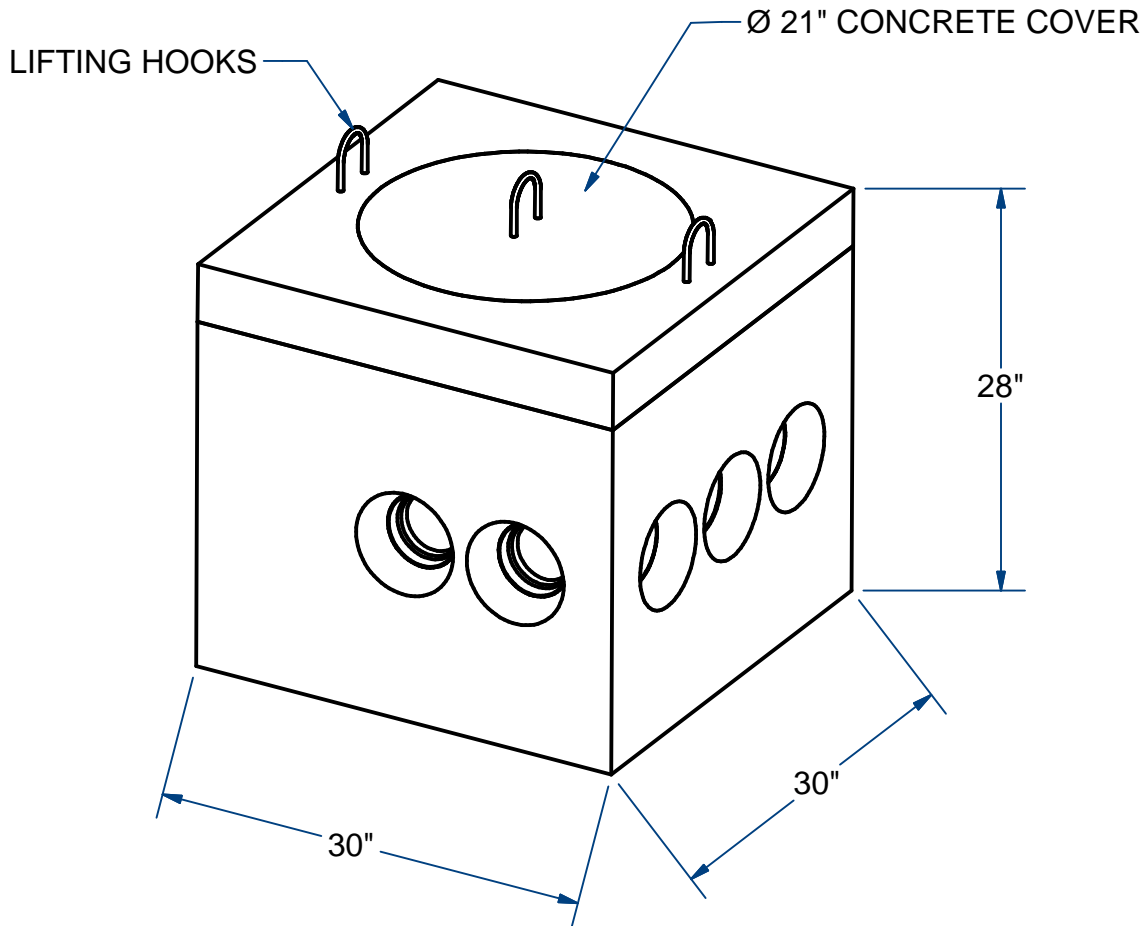
FAX (508) 548-1664

CARVER, MA  
334 TREMONT STREET

HARWICH, MA  
36 GREAT WESTERN ROAD

## NOTES:

1.) AVAILABLE RISER DBR9202 (20"Ht.)



## DISTRIBUTION BOX (30" X 30")

H20

7 OUTLET

ITEM# DB72B

Wt. 1280 Lbs

11-3.1

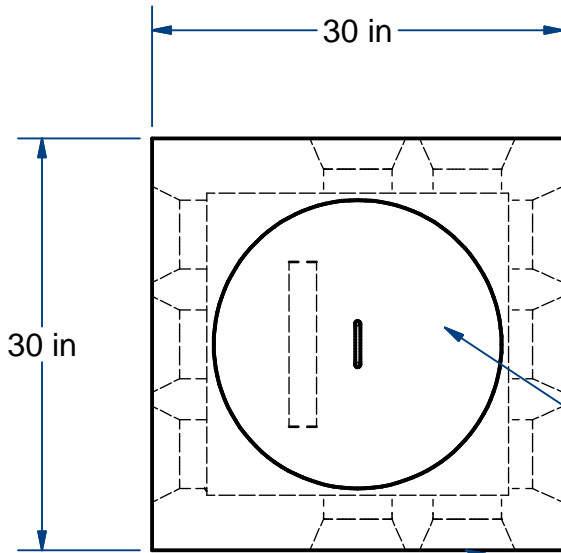
Sht 1 of 2

# ACME-SHOREY

PRECAST CONCRETE PRODUCTS

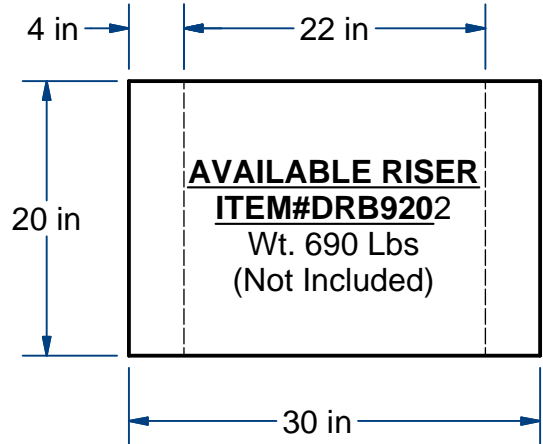
**NOTES:**

1.) AVAILABLE RISER 20"Ht.(DBR9202)

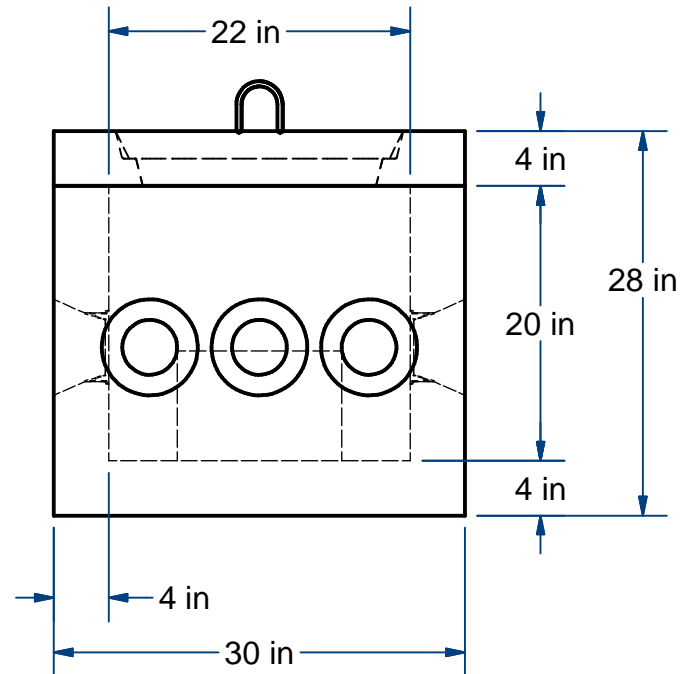
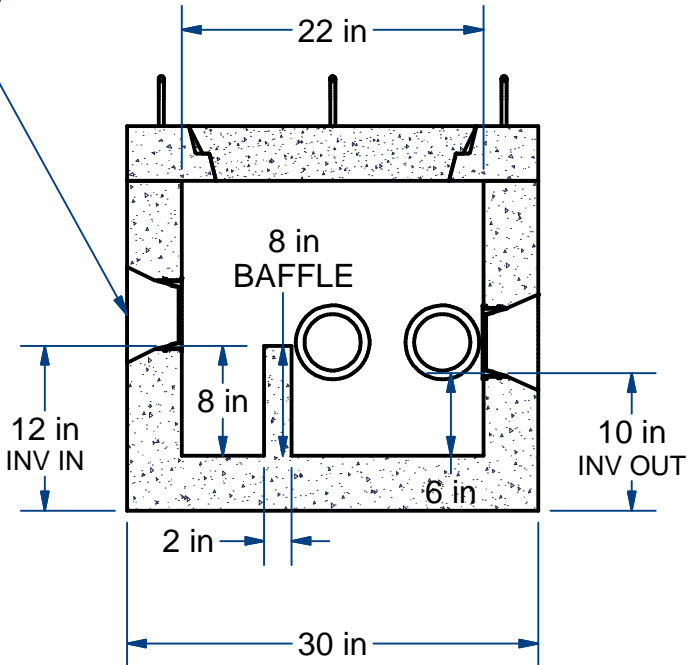


Ø21" CONCRETE COVER

(7) Ø4" OUTLET 'POLYLOK SEAL'



(3) Ø4" INLET 'POLYLOK SEAL'



**NAME: DISTRIBUTION BOX, 7 OUTLET**

**H-20**

**ITEM# DB72B**

Concrete Minimum Strength: 5,000 p.s.i. at 28 days  
Steel Reinforcement: ASTM A615, Grade 60  
Design Loading: standard units - AASHTO - H20

TOP 230  
BOTTOM 1050

Lbs  
Lbs

C

DATE: 11-8-2019

Ch 11 Pg 3.1 Sht 2 of 2