

ACME-SHOREY

PRECAST CONCRETE PRODUCTS

WWW.ACME-SHOREY.COM

PHONE (508) 548-9607

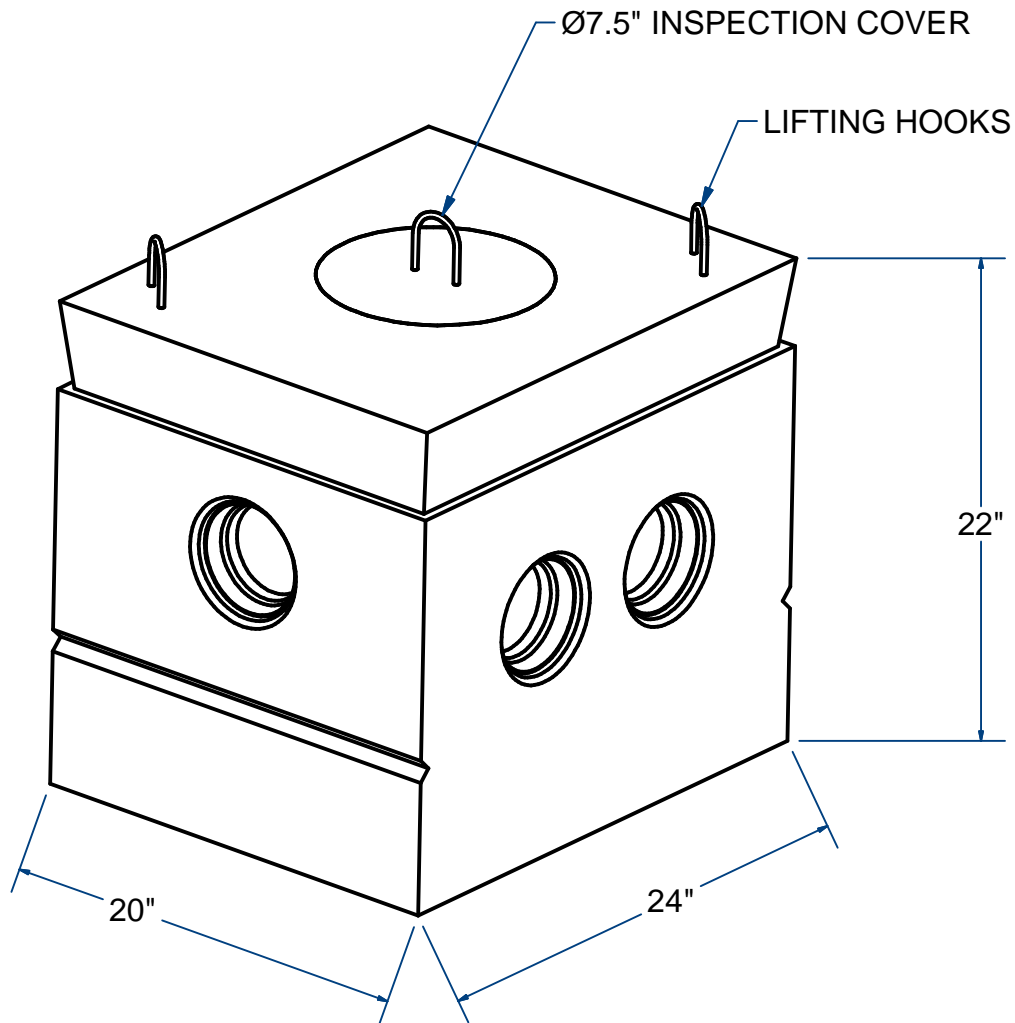
FAX (508) 548-1664

CARVER, MA
334 TREMONT STREET

HARWICH, MA
36 GREAT WESTERN ROAD

NOTES:

- 1.) AVAILABLE RISERS 6" & 15" Ht.
- 2.) MEETS MASS STATE CODE 310 CMR15.232



DISTRIBUTION BOX (20" x 24")

H20

5 OUTLETS

ITEM# DB52

Wt. 675

Lbs

11-2.1

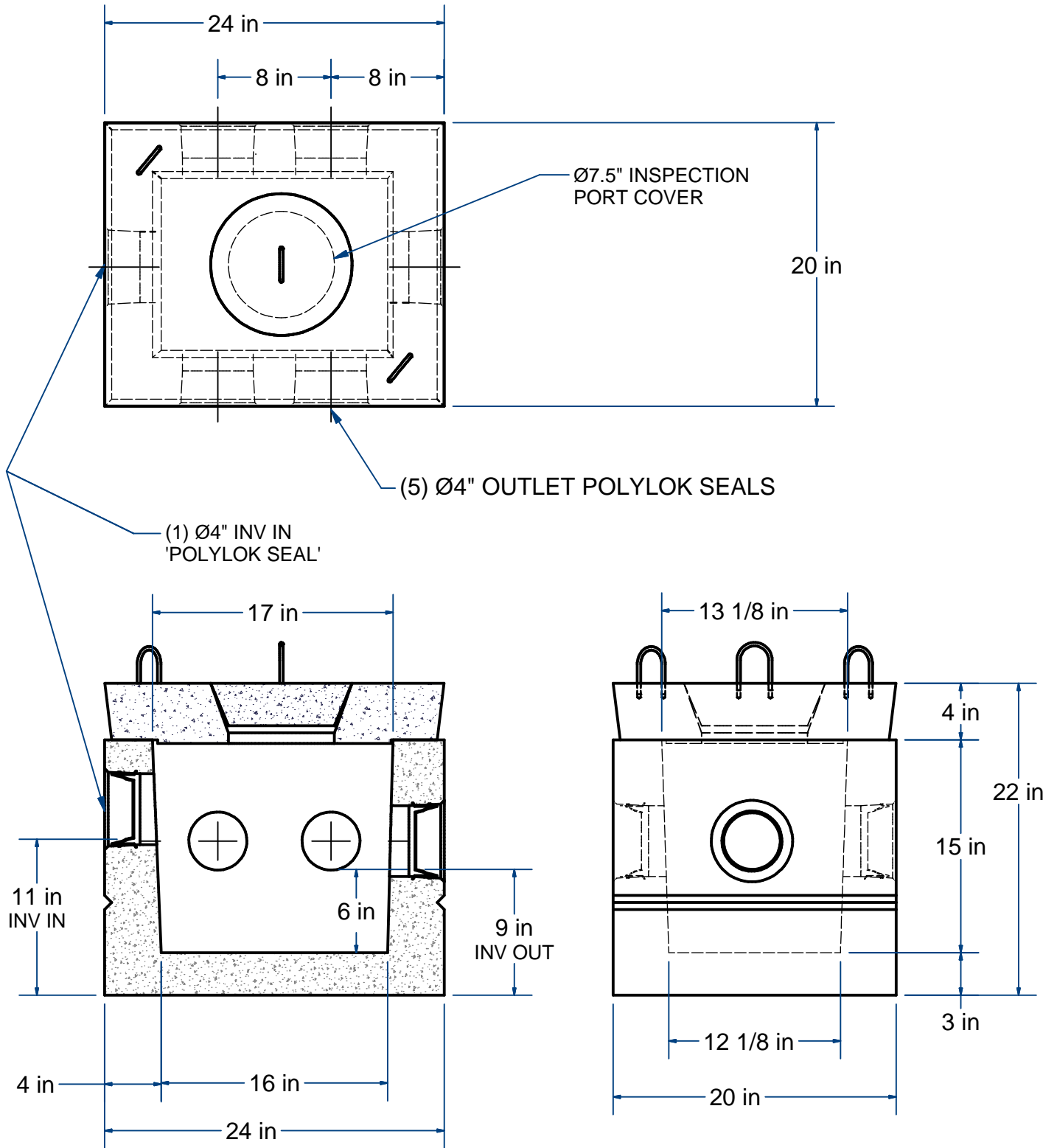
Sht 1 of 2

ACME-SHOREY

PRECAST CONCRETE PRODUCTS

NOTES:

- 1.) AVAILABLE RISERS 6"Ht.(DBR562) & 15"Ht (DBR5152).
- 2.) MEETS MASS STATE CODE 310 CMR15.232



NAME: DISTRIBUTION BOX, 5 OUTLETS

H-20

ITEM# DB52

Concrete Minimum Strength: 5,000 p.s.i. at 28 days
 Steel Reinforcement: ASTM A615, Grade 60
 Design Loading: standard units - AASHTO - H20

TOP 175
 BOTTOM 500

Lbs
 Lbs

C

DATE: 12-1-2019

Ch 11 Pg 2.1 Sht 2 of 2