

# ACME-SHOREY

PRECAST CONCRETE PRODUCTS

WWW.ACME-SHOREY.COM

PHONE (508) 548-9607

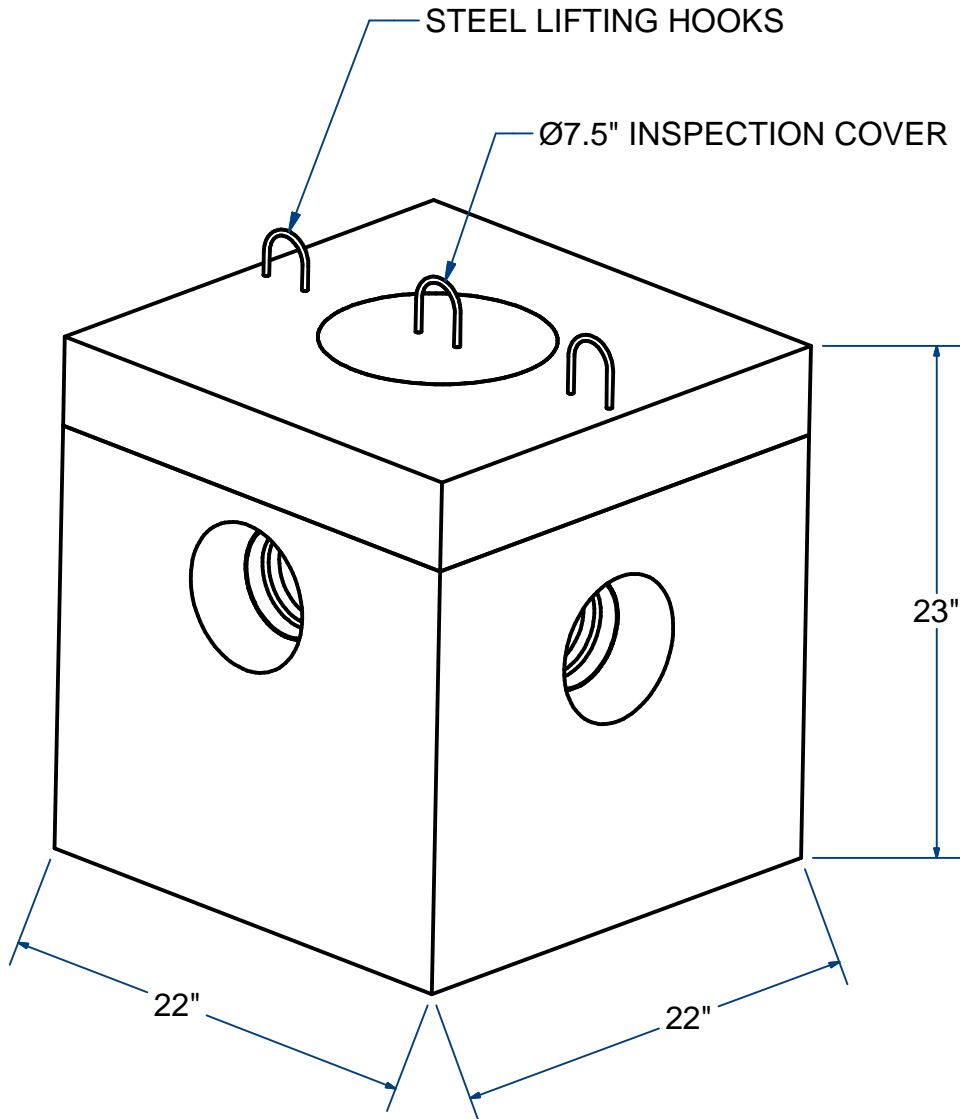
FAX (508) 548-1664

CARVER, MA  
334 TREMONT STREET

HARWICH, MA  
36 GREAT WESTERN ROAD

## NOTES:

- 1.) AVAILABLE RISERS  
6"Ht. (#DBR362) & 15" Ht. (#DBR3152)
- 2.) MEETS MASS STATE ENVIRONMENTAL  
CODE 310 CMR15.232



## DISTRIBUTION BOX (22" x 22")

H20

3 OUTLETS

ITEM# DB32

Wt. 700 Lbs

11-1.1

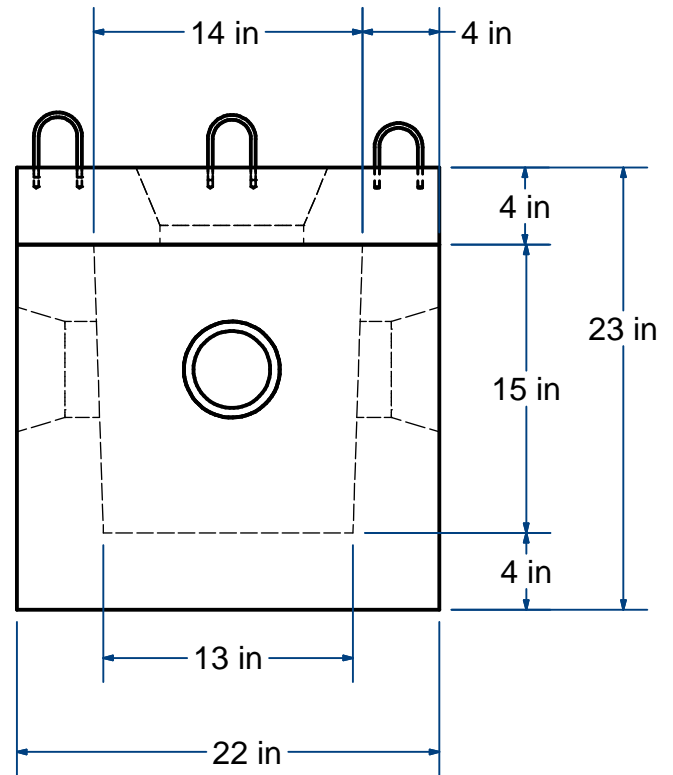
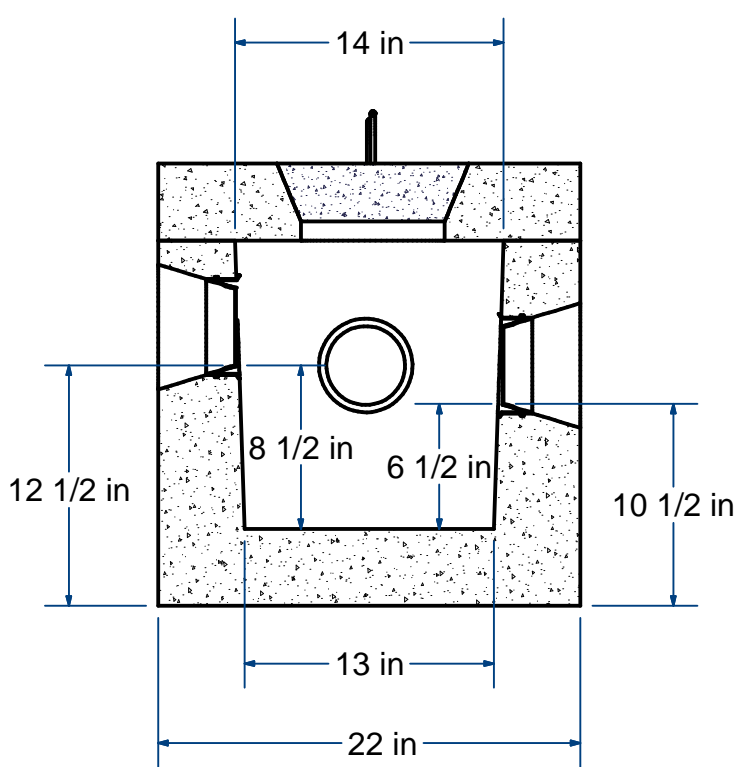
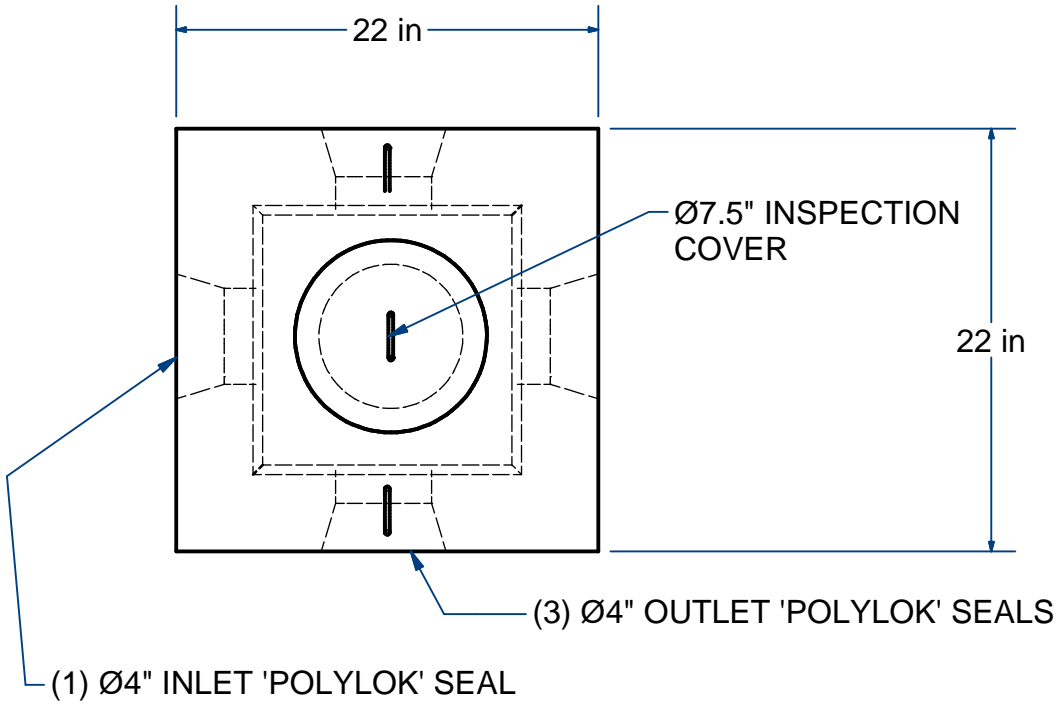
Sht 1 of 2

# ACME-SHOREY

PRECAST CONCRETE PRODUCTS

**NOTES:**

- 1.) AVAILABLE RISERS  
6"Ht. (#DBR362) & 15" Ht. (#DBR3152)
- 2.) MEETS MASS STATE ENVIRONMENTAL  
CODE 310 CMR15.232



**NAME: DISTRIBUTION BOX ,3 OUTLETS**

**H-20**

**ITEM# DB32**

Concrete Minimum Strength: 5,000 p.s.i. at 28 days  
Steel Reinforcement: ASTM A615, Grade 60  
Design Loading: standard units - AASHTO - H20

TOP 175  
BOTTOM 525

Lbs  
Lbs

H

DATE: 11-2-2019

Ch 11 Pg 1.1 Sht 2 of 2