

ACME-SHOREY

PRECAST CONCRETE PRODUCTS

WWW.ACMESHOREY.COM

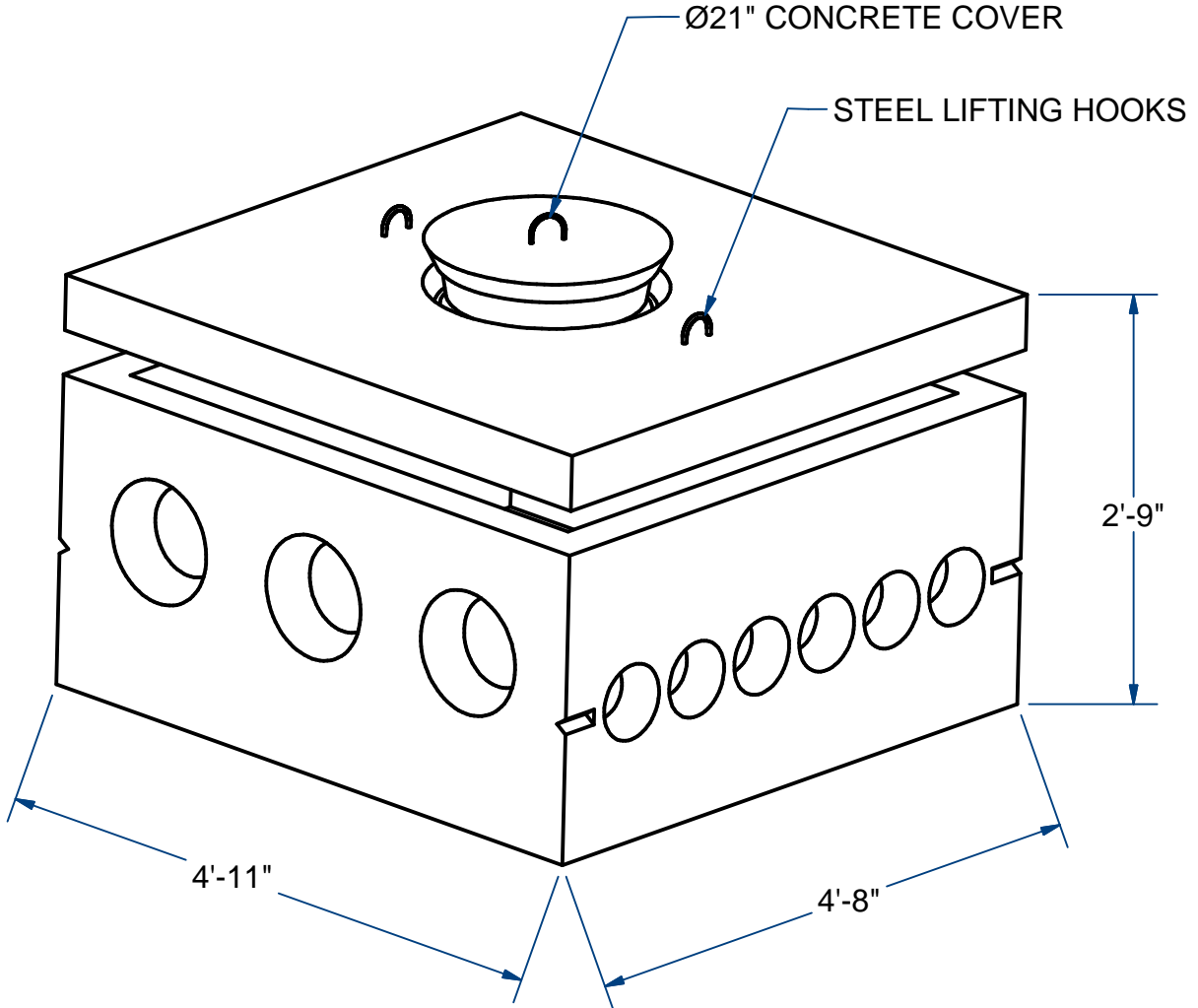
PHONE (508) 548-9607

FAX (508) 548-1664

CARVER, MA
334 TREMONT STREET

HARWICH, MA
36 GREAT WESTERN ROAD

x



DISTRIBUTION BOX (4'-8" X 4'-11")

H20

18 Outlets

ITEM# DB182

Wt. 4,400 Lbs

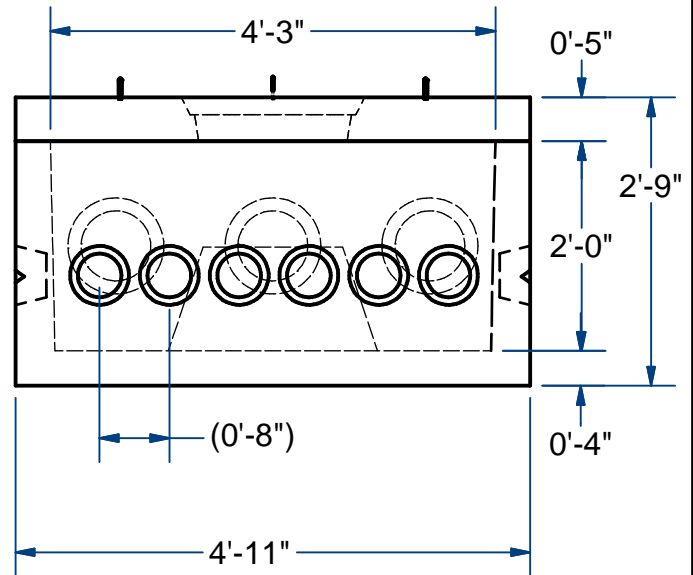
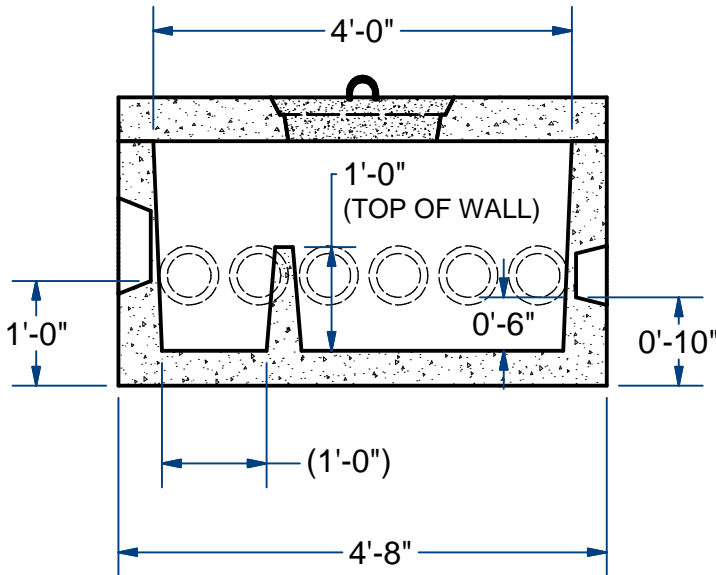
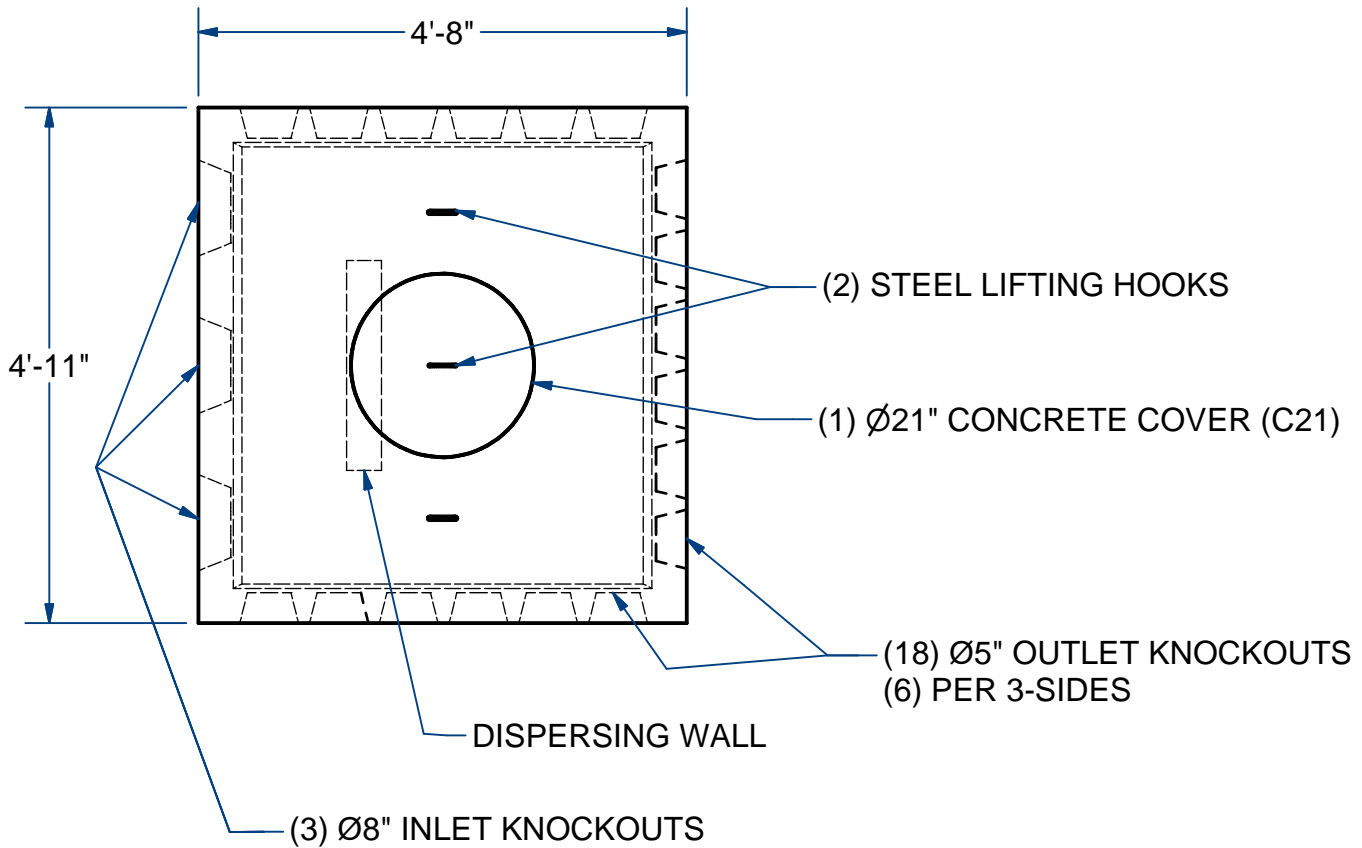
11-5.1

Sht 1 of 2

ACME-SHOREY

PRECAST CONCRETE PRODUCTS

x



NAME: DISTRIBUTION BOX, 18 OUTLETS

H-20

ITEM# DB182

Concrete Minimum Strength: 5,000 p.s.i. at 28 days
Steel Reinforcement: ASTM A615, Grade 60
Design Loading: standard units - AASHTO - H20

TOP 1,400
BOTTOM 3,000

Lbs
Lbs

C

DATE: 11-9-2019

Ch 11 Pg 5.1 Sht 2 of 2