

ACME-SHOREY

PRECAST CONCRETE PRODUCTS

WWW.ACME-SHOREY.COM

PHONE (508) 548-9607

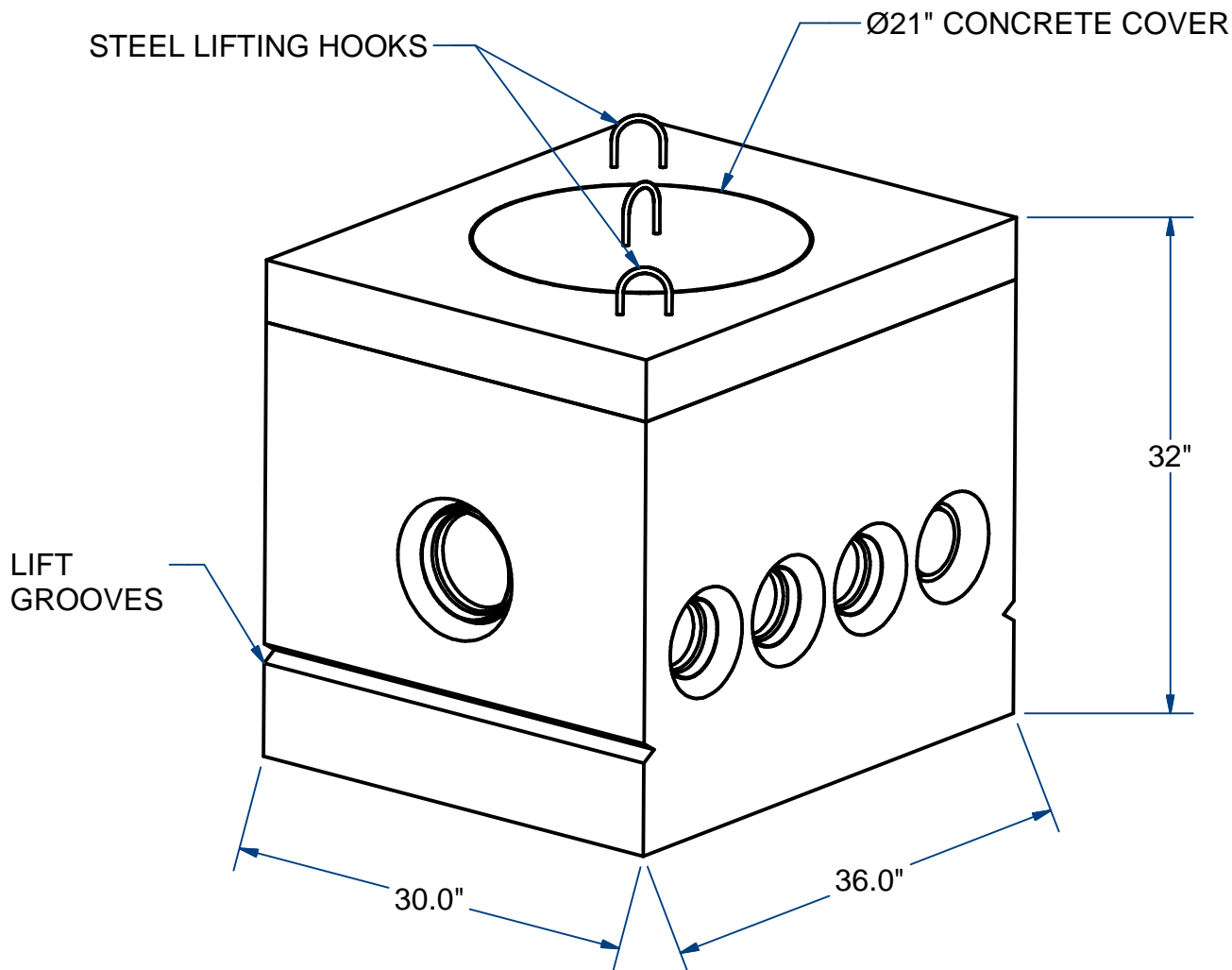
FAX (508) 548-1664

CARVER, MA
334 TREMONT STREET

HARWICH, MA
36 GREAT WESTERN ROAD

NOTES:

- 1.) AVAILABLE RISER #DBR11242 (24" Ht.)



DISTRIBUTION BOX (30" X 36")

H20

11 Outlets

ITEM# DB112

Wt. 1500 Lbs

11-4.1

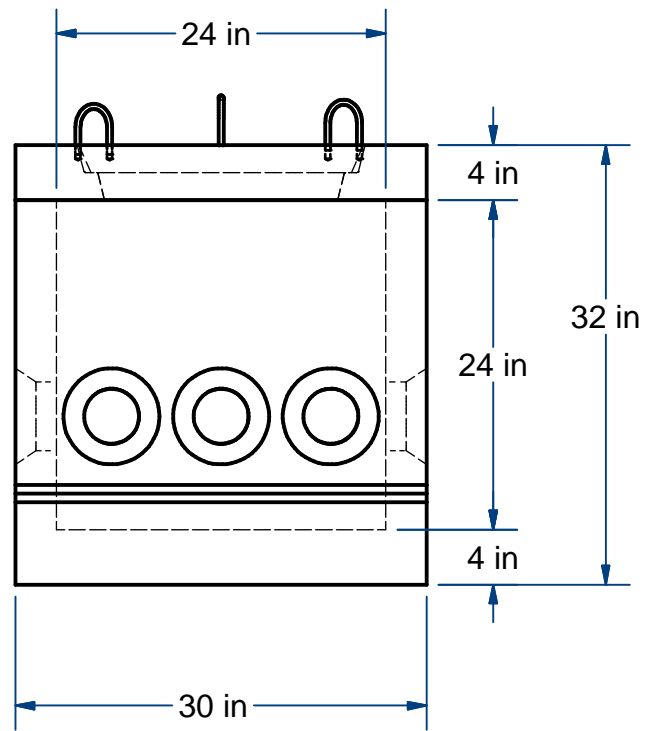
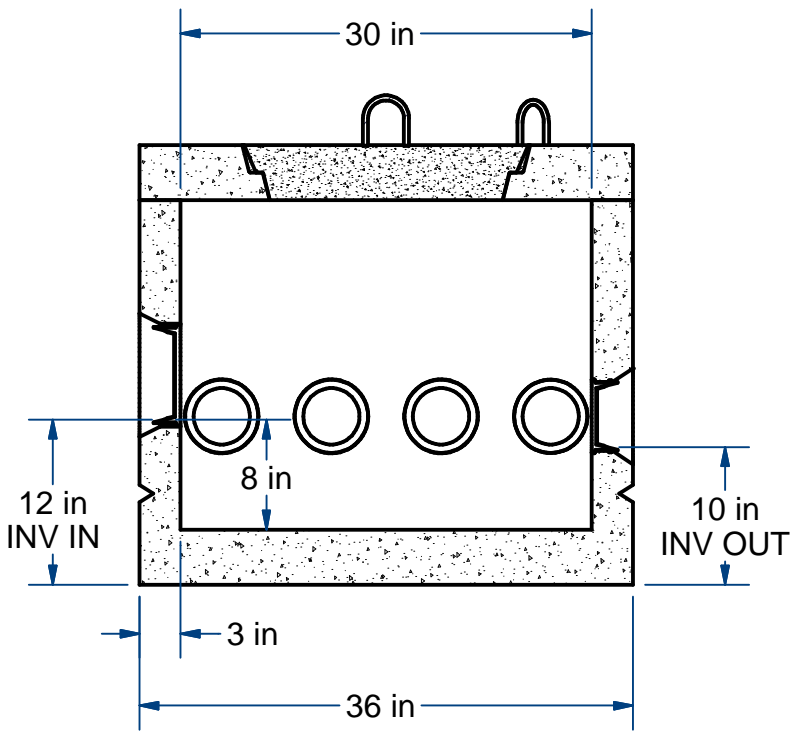
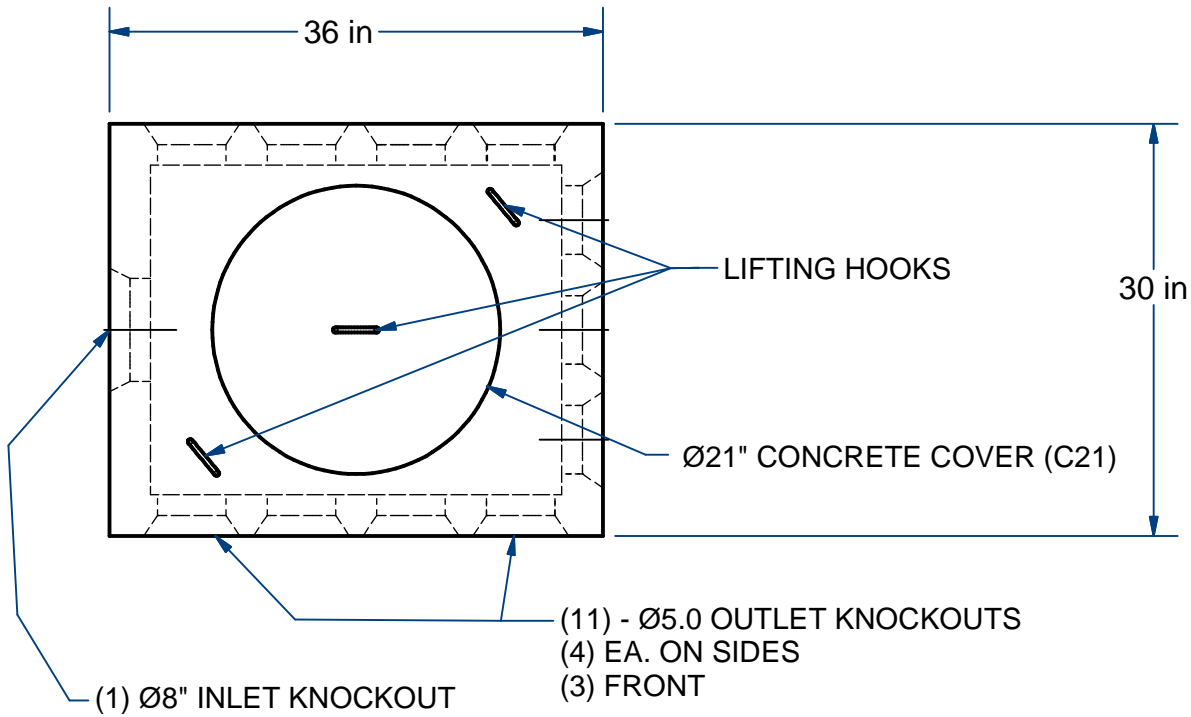
Sht 1 of 2

ACME-SHOREY

PRECAST CONCRETE PRODUCTS

NOTES:

1.) AVAILABLE RISER X 24" Ht. (#DBR11242)



NAME: DISTRIBUTION BOX, 11 OUTLETS

H-20

ITEM# DB112

Concrete Minimum Strength: 5,000 p.s.i. at 28 days
 Steel Reinforcement: ASTM A615, Grade 60
 Design Loading: standard units - AASHTO - H20

TOP 400
 BOTTOM 1100

Lbs
 Lbs

H

DATE: 11-9-2019

Ch 11 Pg 4.1 Sht 2 of 2